

Contemporary Urban Style

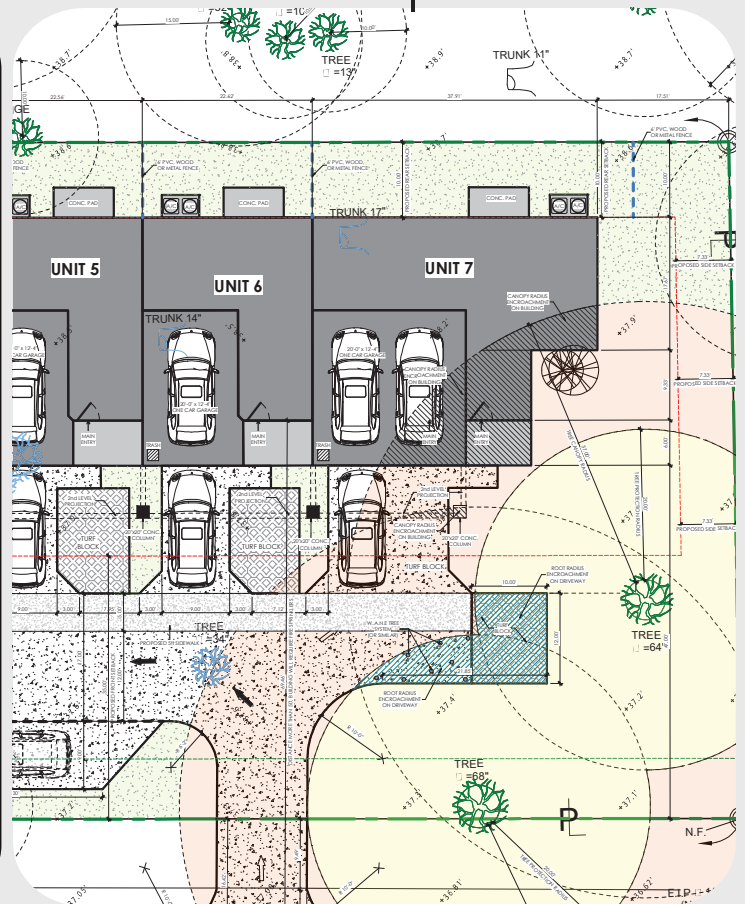
LOCATION: MAC DILL AVE, TAMPA, FL
CLIENT: THE PORT HOMES



Clean Geometry Minimalist finishes

This architectural project reflects a focus on functional design that caters to modern city living. The sharp lines, black framing, and soft lighting transitions give it a sleek, cosmopolitan edge. The integration of natural elements through glass balconies and warm wood tones brings balance and warmth to the overall aesthetic.

The façade design plays with rhythm and repetition while allowing individual units to feel distinct through staggered balconies and varied lighting. Rooftop terraces add another layer of usability, turning the roof into a private escape with city or garden views. Vertical emphasis in the black frames draws the eye upward, giving the building a strong architectural presence.



MACDILL TOWNHOMES



Uniformity and Modular Rhythm



ELEMENTS OBSERVED

- Balcony Projection
- Frontal Garage Integration
- Window Variety ■
- Rooftop Utility Spaces



MACDILL TOWNHOMES

Blending residential comfort with luxury

Strategically placed lighting elements not only serve functionality but also elevate the visual drama during evening hours. With an efficient footprint and upscale finishes, this project caters to professionals and families seeking modern comfort, security, and a sense of place in an urban environment.

